

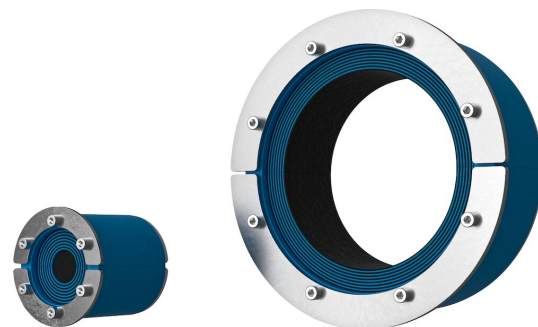


# Bague Roxtec RS

Solution étanche pour câble ou tuyauterie unique.

Le Roxtec RS est une bague pour l'installation de câbles ou tuyauteries uniques dans des manchons en métal ou des trous existants. Le passage étanche est constitué de deux parties avec des couches pelables pour s'adapter à des câbles et des tuyauteries de différentes tailles. Le design du passage facilite son installation autour de câbles et tuyauteries existants.

- Résistant aux rongeurs
- Installation facile et rapide



## Caractéristiques du produit



Coupe-feu



Étanche à l'eau



Étanche au gaz

## Structure d'installation



Métal



Béton

## Type de fixation



Trou existant



Douille existante

## Classements et certificats

### Feu

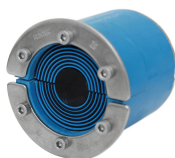
- CLASSE A conformément au code FTP IMO 2010
- Classement E/EI selon EN 13501
- Classement E/EI selon EN 45545 E30
- Classement F/T selon UL 1479
- CLASSE H selon IMO 2010 FTP Code + Courbe de charge calorifique HC
- Jetfire selon ISO 22899-1 et OTI 95634

### Étanchéité

- Gaz: 2,67 bars (catastrophique)
- Eau: 4 bars (catastrophique)

## Éléments d'étanchéité

### Éléments d'étanchéité



Bague RS



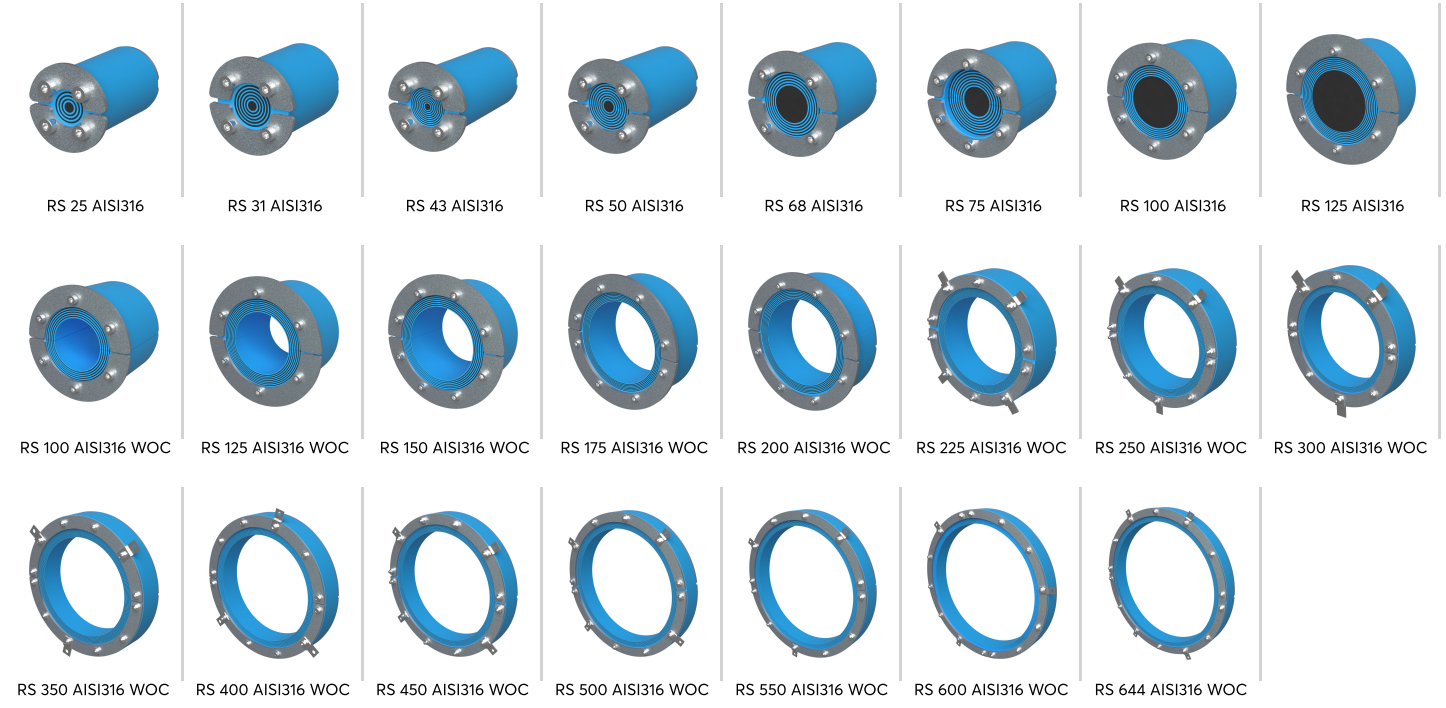
Lubrifiant Roxtec

Pour plus d'informations, veuillez consulter [roxtec.com](https://www.roxtec.com).



# Kits de passage préconfigurés

mm/kg



| Titre              | Configuration    | Dimensions d'ouverture<br>∅ | Poids | N° art.       |
|--------------------|------------------|-----------------------------|-------|---------------|
| RS 25 AISI316      | 1x (3.6-12.0)    | 25 - 26                     | 0.08  | RS00100251023 |
| RS 31 AISI316      | 1x (4.0-17.0)    | 31 - 32                     | 0.09  | RS00100311023 |
| RS 43 AISI316      | 1x (4.0-23.0)    | 43 - 45                     | 0.24  | RS00100431023 |
| RS 50 AISI316      | 1x (8.0-30.0)    | 50 - 52                     | 0.31  | RS00100501023 |
| RS 68 AISI316      | 1x (26.0-48.0)   | 68 - 70                     | 0.5   | RS00100681023 |
| RS 75 AISI316      | 1x (24.0-54.0)   | 75 - 77                     | 0.6   | RS00100751023 |
| RS 100 AISI316     | 1x (48.0-70.0)   | 100 - 102                   | 1     | RS00101001023 |
| RS 125 AISI316     | 1x (66.0-98.0)   | 125 - 127                   | 1.6   | RS00101251023 |
| RS 100 AISI316 WOC | 1x (48.0-70.0)   | 100 - 102                   | 0.8   | RS00001001023 |
| RS 125 AISI316 WOC | 1x (66.0-98.0)   | 125 - 127                   | 1.4   | RS00001251023 |
| RS 150 AISI316 WOC | 1x (93.0-119.0)  | 150 - 152                   | 1.6   | RS00001501023 |
| RS 175 AISI316 WOC | 1x (119.0-145.0) | 175 - 177                   | 2.3   | RS00175750021 |
| RS 200 AISI316 WOC | 1x (138.0-170.0) | 200 - 203                   | 2.7   | RS00200750021 |
| RS 225 AISI316 WOC | 1x (151.0-181.0) | 225 - 228                   | 3.2   | RS00002250021 |
| RS 250 AISI316 WOC | 1x (176.0-206.0) | 250 - 253                   | 3.3   | RS00002500021 |
| RS 300 AISI316 WOC | 1x (206.0-236.0) | 300 - 303                   | 5.7   | RS00003000021 |
| RS 350 AISI316 WOC | 1x (244.0-286.0) | 350 - 353                   | 7.2   | RS00003500021 |
| RS 400 AISI316 WOC | 1x (294.0-336.0) | 400 - 403                   | 9.4   | RS00004000021 |
| RS 450 AISI316 WOC | 1x (344.0-386.0) | 450 - 453                   | 10.7  | RS00004500021 |
| RS 500 AISI316 WOC | 1x (394.0-436.0) | 500 - 503                   | 13    | RS00005000021 |
| RS 550 AISI316 WOC | 1x (444.0-486.0) | 550 - 553                   | 14.4  | RS00005500021 |
| RS 600 AISI316 WOC | 1x (494.0-536.0) | 600 - 603                   | 15.7  | RS00006000021 |
| RS 644 AISI316 WOC | 1x (538.0-580.0) | 644 - 647                   | 17    | RS00006440021 |



The product information provided by Roxtec does not release the purchaser of the Roxtec system, or part thereof, from the obligation to independently determine the suitability of the products for the intended process, installation and/or use.

Roxtec gives no guarantee for the Roxtec system or any part thereof and assumes no liability for any loss or damage whatsoever, whether direct, indirect, consequential, loss of profit or otherwise, occurred or caused by the Roxtec systems or installations containing components not manufactured by an authorized manufacturer and/or occurred or caused by the use of the Roxtec system in a manner or for an application other than for which the Roxtec system was designed or intended.

Roxtec expressly excludes any implied warranties of merchantability and fitness for a particular purpose and all other express or implied representations and warranties provided by statute or common law. User determines suitability of the Roxtec system for intended use and assumes all risk and liability in connection therewith. In no event shall Roxtec be liable for indirect, consequential, punitive, special, exemplary or incidental damages or losses.

The Roxtec products are offered and sold in accordance with the conditions of the Roxtec General Terms of Sales. The latest version of the Roxtec General Terms of Sales can be downloaded from <https://www.roxtec.com/en/about-us/about-roxtec/general-terms-of-sales/>

We reserve the right to make changes to the product and technical information without further notice. Any errors in print or entry are no claims for indemnity. The content of this publication is the property of Roxtec International AB and is protected by copyright.

This document was generated on: 2024-04-06